

Graceton to Bagley to Raphael Road Reconductor Project

Public Information Meeting
Tuesday, February 18, 2020

Lauren McKee, Sr. Project Manager

February 2020



An Exelon Company



Welcome

- Introductions
- BGE Reliability Upgrades
- Project Background
- Scope of Work
- Project Schedule
- Questions & Answers



An Exelon Company



What does **RELIABILITY** mean?



RELIABLE ENERGY.
SMART ENERGY.



An Exelon Company



Investing in Our Infrastructure

- Investments in infrastructure upgrades and maintenance contributed to a ~20% improvement in system-wide reliability since 2010
- BGE has invested more than \$9 billion in system upgrades and expansions since 2002, including ongoing investments in natural gas pipes, utility poles, overhead power lines, underground cable and other equipment
- To maintain the responsibility as steward of ratepayer's money, an additional \$4.5 billion will be invested in infrastructure over the next five years
- System upgrades and expansions are expected to lead to fewer outages and faster restoration when outages occur



An Exelon Company



Reliability

- BGE is committed to safely and reliably maintaining specific levels of service to the consumer
- BGE routinely monitors the system's infrastructure (including poles, meters, transformers, trees, gas mains & transmission lines)



An Exelon Company



Project Purpose

- To provide safe and reliable delivery of energy to our customers
- To improve market efficiency, transmission reliability and reduce congestion on the system within the Pennsylvania, Jersey, Maryland (PJM) Power Pool
- To reduce the potential for market congestion and decrease impacts to the BGE transmission zone identified in the Market Efficiency Analysis Long Term Proposal
- To meet the requirements of the PJM Regional Transmission Expansion Plan (RTEP)



An Exelon Company



Project Background

- BGE is upgrading the transmission infrastructure between the Graceton Substation in Pylesville, Harford County; the Bagley Substation in Fallston, Harford County; and the Raphael Road Substation in Kingsville, Baltimore County.
- This project will help BGE improve the capacity and reliability of the existing lines in this corridor.



An Exelon Company

[THAT'S
SMART
ENERGY]SM

Project Scope

- Install or maintain stone construction entrances where needed along BGE right-of-way
- Reconductor 21 miles of transmission wire



An Exelon Company

[THAT'S
SMART
ENERGY]™



Project Features

- Existing Structure
- ▲ Project Substation
- Project Circuit
- Proposed Access
- Limits of Disturbance (LOD)
- ☁ FEMA 100 Year Flood

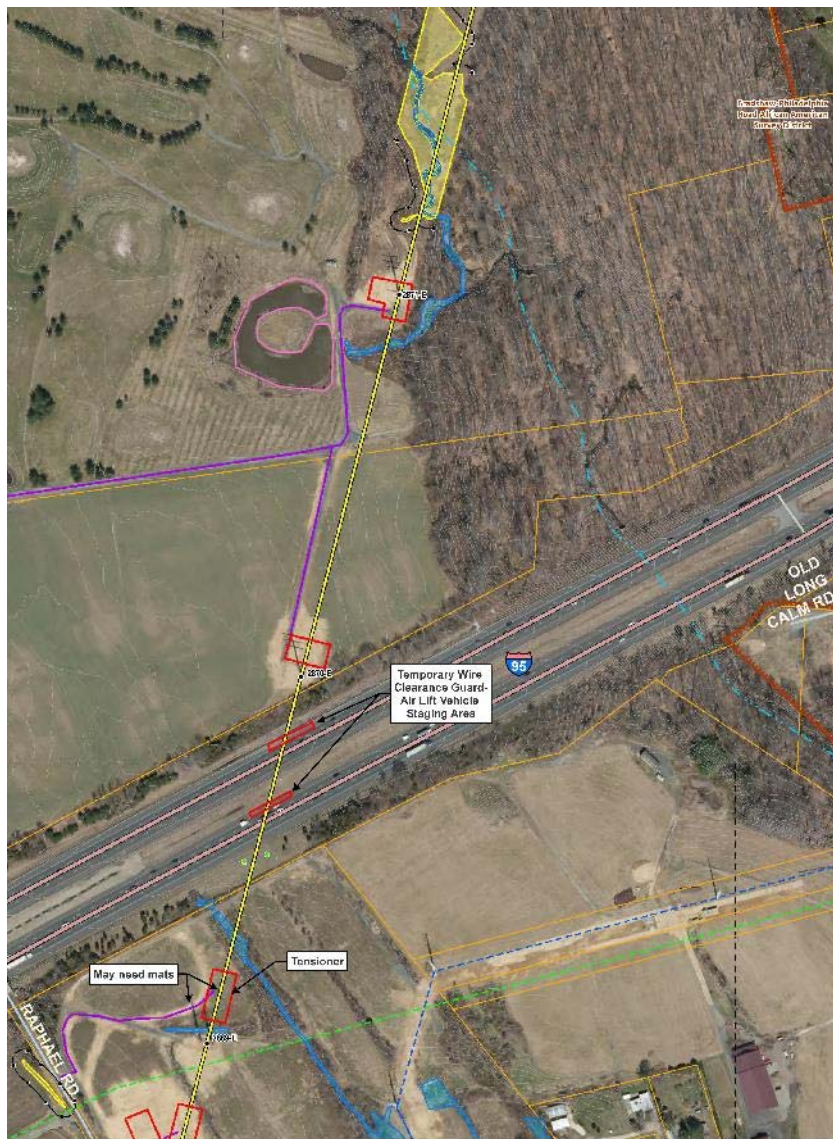
Boundary Features

- Parcel Boundary
- ▬ Easement or Protected Land



An Exelon Company





Project Features

- Existing Structure
- ▲ Project Substation
- Project Circuit
- Proposed Access
- ▭ Limits of Disturbance (LOD)
- ☁ FEMA 100 Year Flood

Boundary Features

- ▭ Parcel Boundary
- ▭ Easement or Protected Land



An Exelon Company





Project Features

- Existing Structure
- ▲ Project Substation
- Project Circuit
- Proposed Access
- ▭ Limits of Disturbance (LOD)
- ☁ FEMA 100 Year Flood

Boundary Features

- ▭ Parcel Boundary
- ▭ Easement or Protected Land








An Exelon Company







Project Features

- Existing Structure
-  Project Substation
-  Project Circuit
-  Proposed Access
-  Limits of Disturbance (LOD)
-  FEMA 100 Year Flood

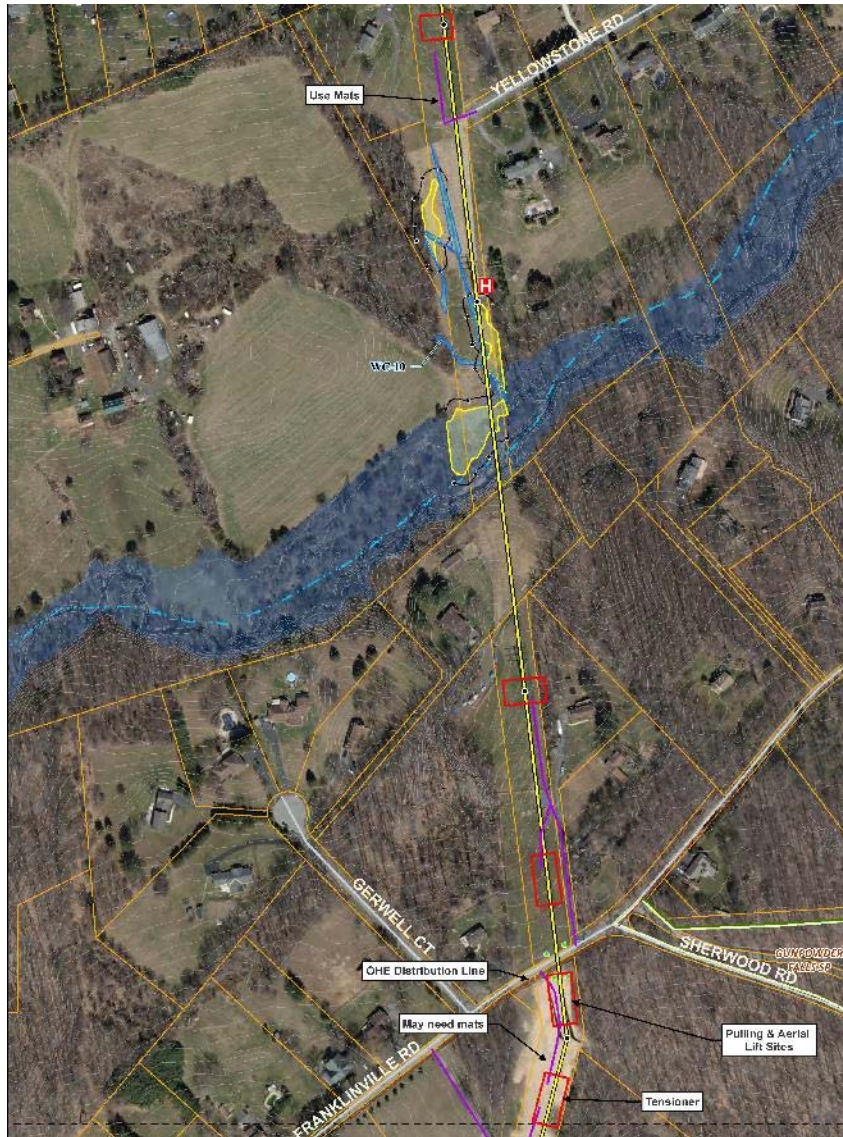
Boundary Features

-  Parcel Boundary
-  Easement or Protected Land








An Exelon Company







Project Features

- Existing Structure
-  Project Substation
-  Project Circuit
-  Proposed Access
-  Limits of Disturbance (LOD)
-  FEMA 100 Year Flood

Boundary Features

-  Parcel Boundary
-  Easement or Protected Land



An Exelon Company





Project Features

- Existing Structure
- ▲ Project Substation
- Project Circuit
- Proposed Access
- Limits of Disturbance (LOD)
- ☁ FEMA 100 Year Flood

Boundary Features

- Parcel Boundary
- Easement or Protected Land








An Exelon Company







Project Features

- Existing Structure
-  Project Substation
-  Project Circuit
-  Proposed Access
-  Limits of Disturbance (LOD)
-  FEMA 100 Year Flood

Boundary Features

-  Parcel Boundary
-  Easement or Protected Land



An Exelon Company





Project Features

- Existing Structure
- ▲ Project Substation
- Project Circuit
- Proposed Access
- Limits of Disturbance (LOD)
- ☁ FEMA 100 Year Flood

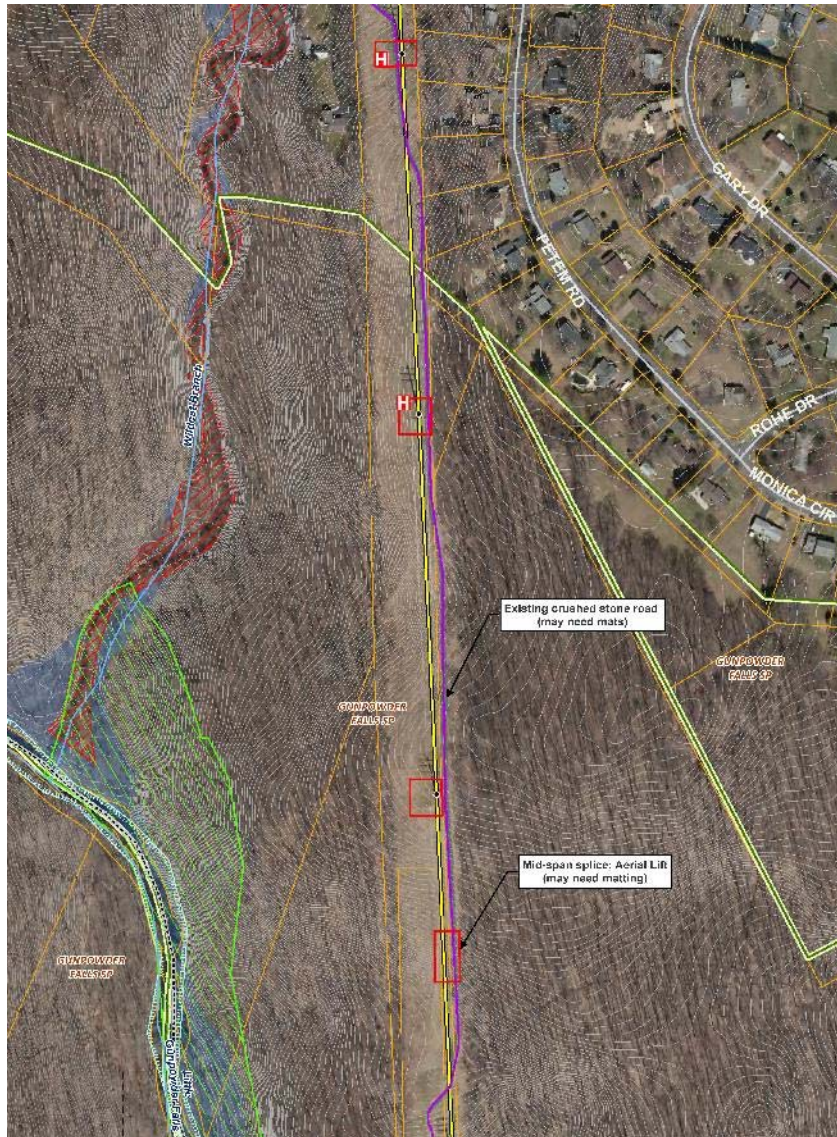
Boundary Features

- Parcel Boundary
- Easement or Protected Land



An Exelon Company





Project Features

- Existing Structure
- ▲ Project Substation
- Project Circuit
- Proposed Access
- ▭ Limits of Disturbance (LOD)
- ☁ FEMA 100 Year Flood

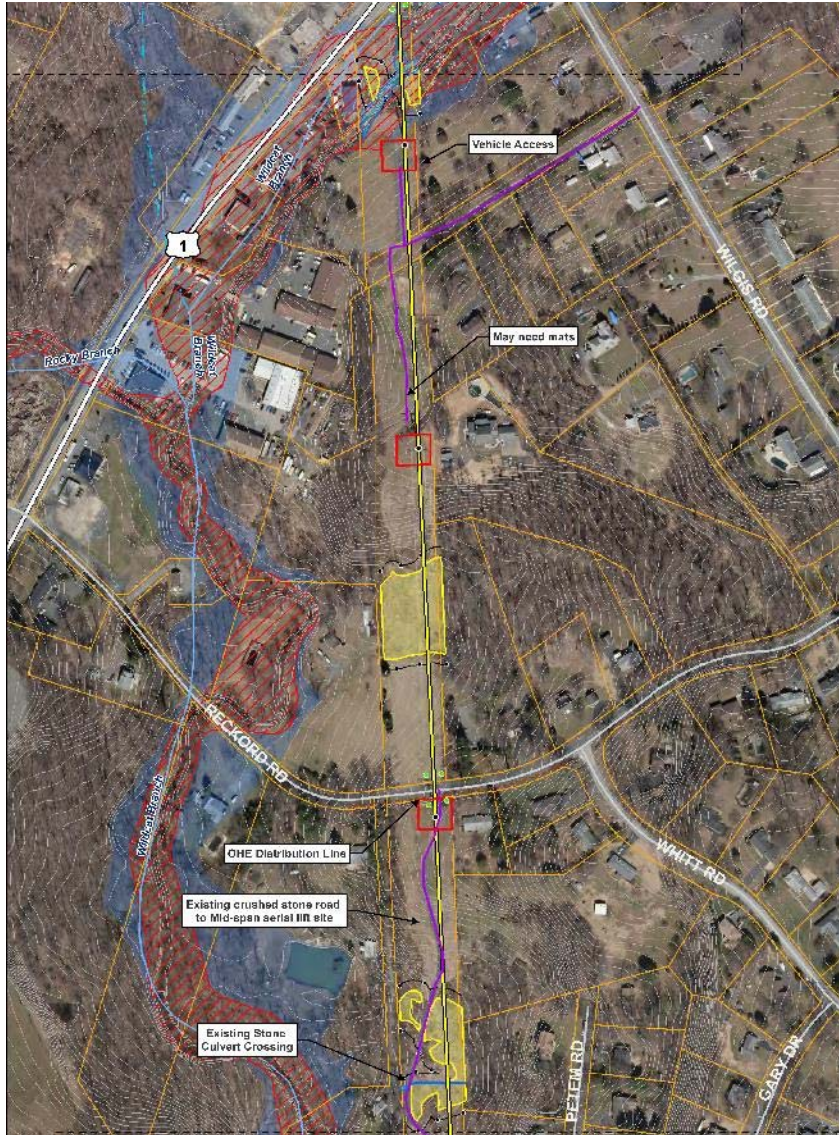
Boundary Features

- ▭ Parcel Boundary
- ▭ Easement or Protected Land








An Exelon Company







Project Features

- Existing Structure
-  Project Substation
-  Project Circuit
-  Proposed Access
-  Limits of Disturbance (LOD)
-  FEMA 100 Year Flood

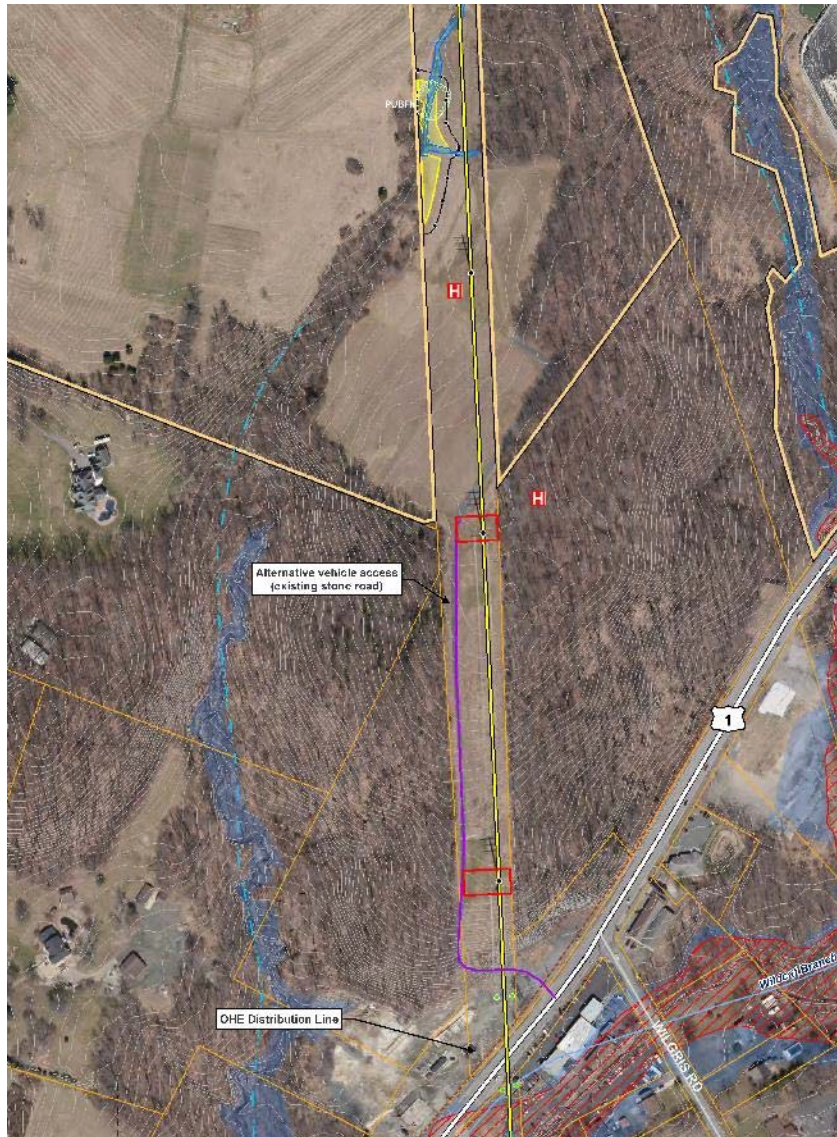
Boundary Features

-  Parcel Boundary
-  Easement or Protected Land








An Exelon Company







Project Features

- Existing Structure
-  Project Substation
-  Project Circuit
-  Proposed Access
-  Limits of Disturbance (LOD)
-  FEMA 100 Year Flood

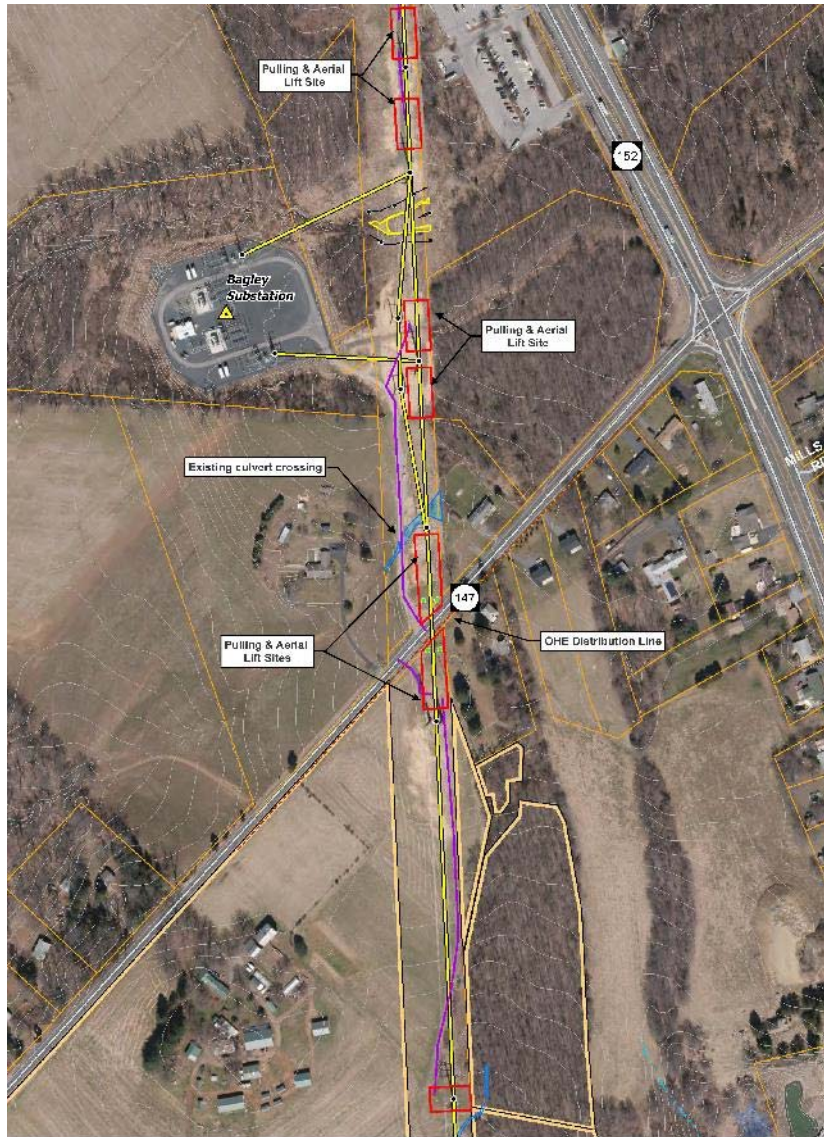
Boundary Features

-  Parcel Boundary
-  Easement or Protected Land



An Exelon Company





Project Features

- Existing Structure
- ▲ Project Substation
- Project Circuit
- Proposed Access
- Limits of Disturbance (LOD)
- ☁ FEMA 100 Year Flood

Boundary Features

- Parcel Boundary
- ▬ Easement or Protected Land








An Exelon Company







Project Features

- Existing Structure
-  Project Substation
-  Project Circuit
-  Proposed Access
-  Limits of Disturbance (LOD)
-  FEMA 100 Year Flood

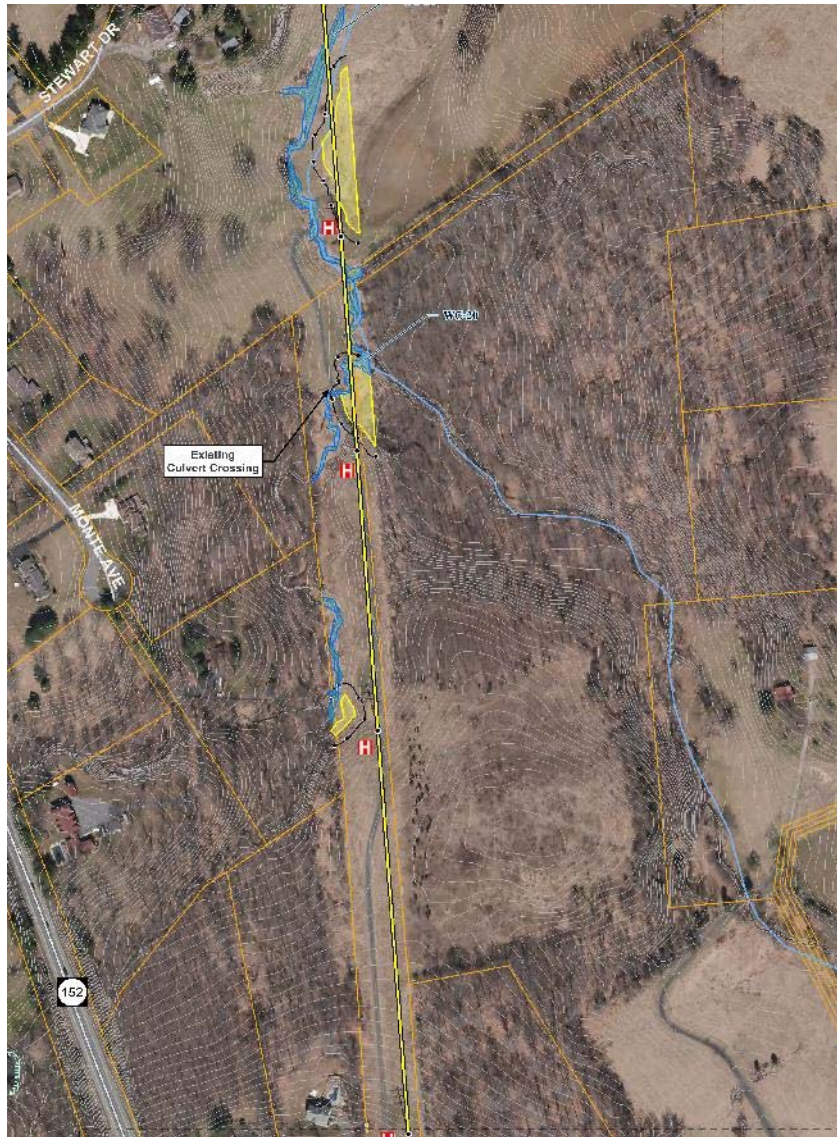
Boundary Features

-  Parcel Boundary
-  Easement or Protected Land



An Exelon Company





Project Features

- Existing Structure
- ▲ Project Substation
- Project Circuit
- Proposed Access
- ▭ Limits of Disturbance (LOD)
- ☁ FEMA 100 Year Flood

Boundary Features

- ▭ Parcel Boundary
- ▭ Easement or Protected Land








An Exelon Company







Project Features

- Existing Structure
-  Project Substation
-  Project Circuit
-  Proposed Access
-  Limits of Disturbance (LOD)
-  FEMA 100 Year Flood

Boundary Features

-  Parcel Boundary
-  Easement or Protected Land



An Exelon Company





Project Features

- Existing Structure
- ▲ Project Substation
- Project Circuit
- Proposed Access
- ▭ Limits of Disturbance (LOD)
- ☁ FEMA 100 Year Flood

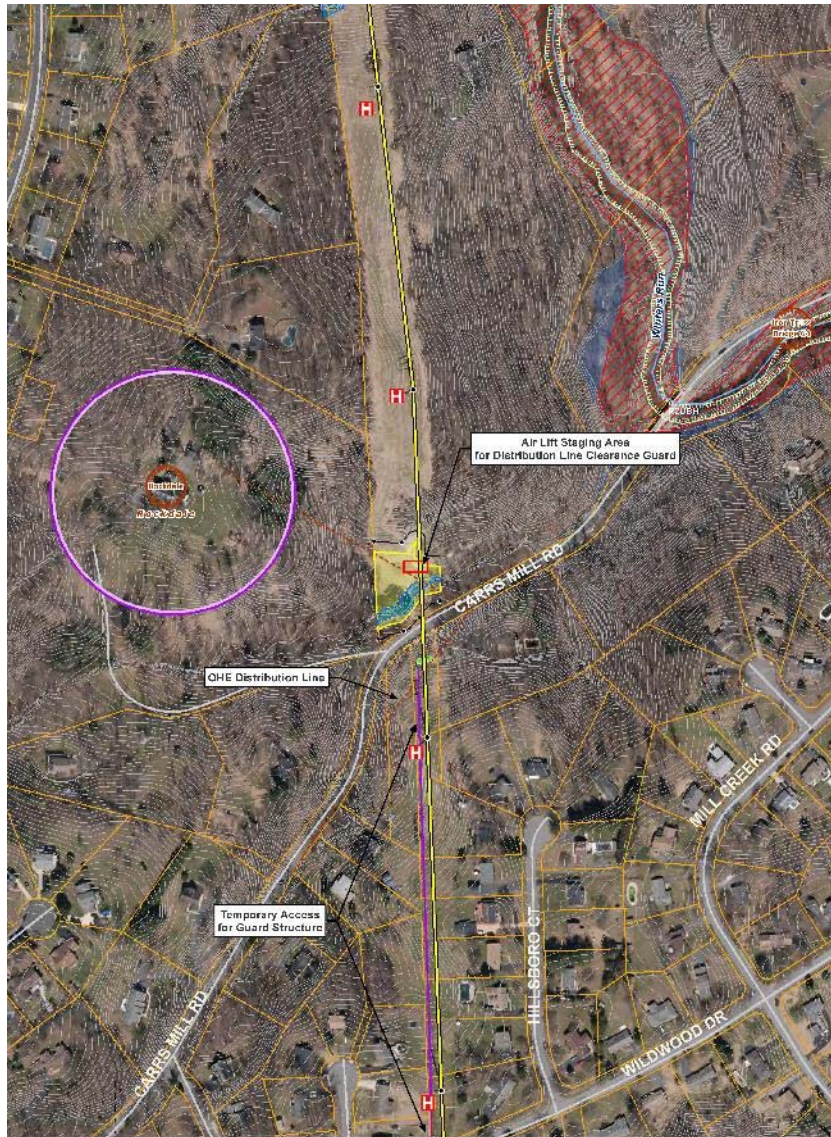
Boundary Features

- ▭ Parcel Boundary
- ▭ Easement or Protected Land



An Exelon Company





Project Features

- Existing Structure
- ▲ Project Substation
- Project Circuit
- Proposed Access
- Limits of Disturbance (LOD)
- ☁ FEMA 100 Year Flood

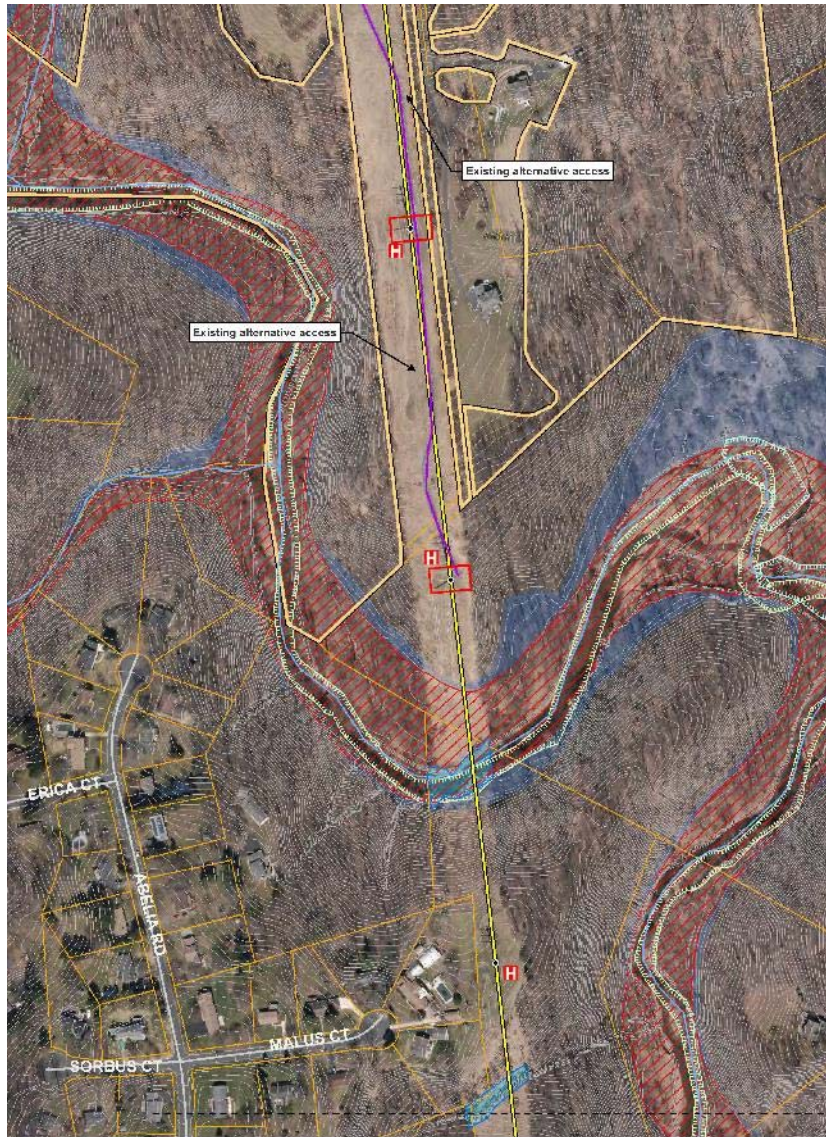
Boundary Features

- Parcel Boundary
- ▬ Easement or Protected Land



An Exelon Company





Project Features

- Existing Structure
- ▲ Project Substation
- Project Circuit
- Proposed Access
- ▭ Limits of Disturbance (LOD)
- ☁ FEMA 100 Year Flood

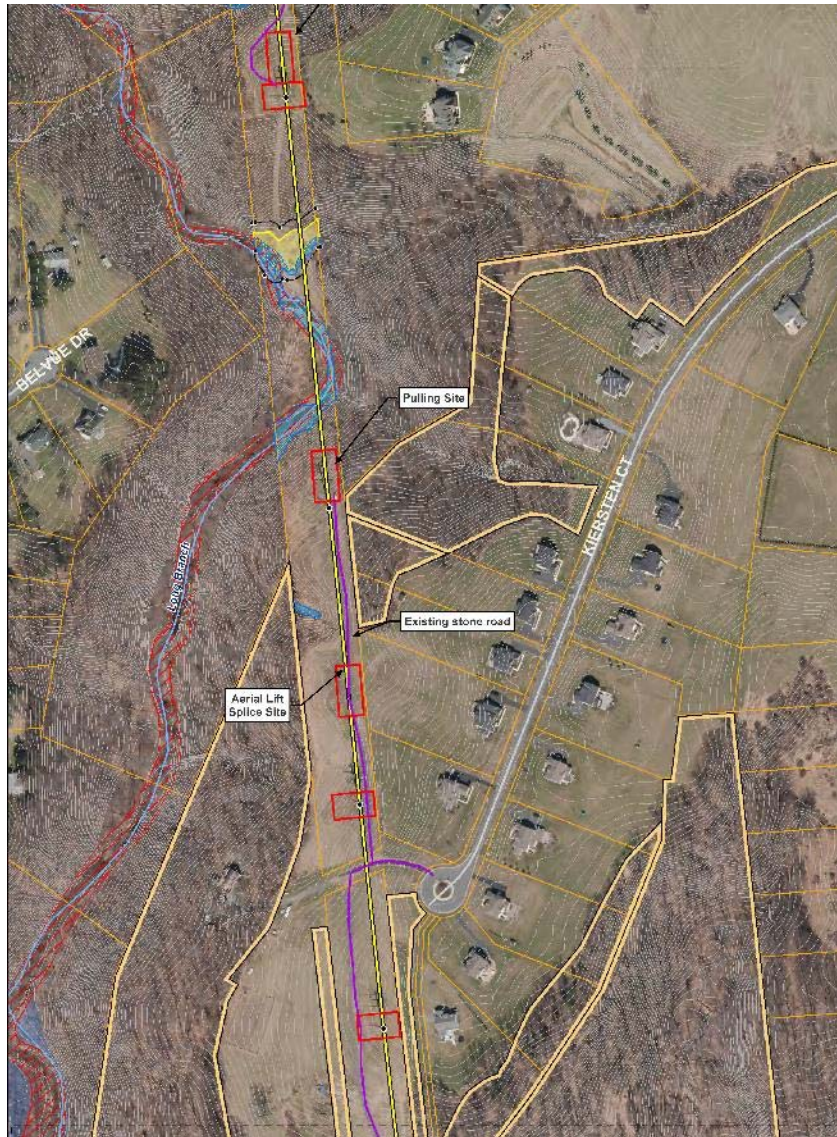
Boundary Features

- ▭ Parcel Boundary
- ▭ Easement or Protected Land



An Exelon Company





Project Features

- Existing Structure
- ▲ Project Substation
- Project Circuit
- Proposed Access
- ▭ Limits of Disturbance (LOD)
- ☁ FEMA 100 Year Flood

Boundary Features

- ▭ Parcel Boundary
- ▭ Easement or Protected Land








An Exelon Company







Project Features

- Existing Structure
-  Project Substation
-  Project Circuit
-  Proposed Access
-  Limits of Disturbance (LOD)
-  FEMA 100 Year Flood

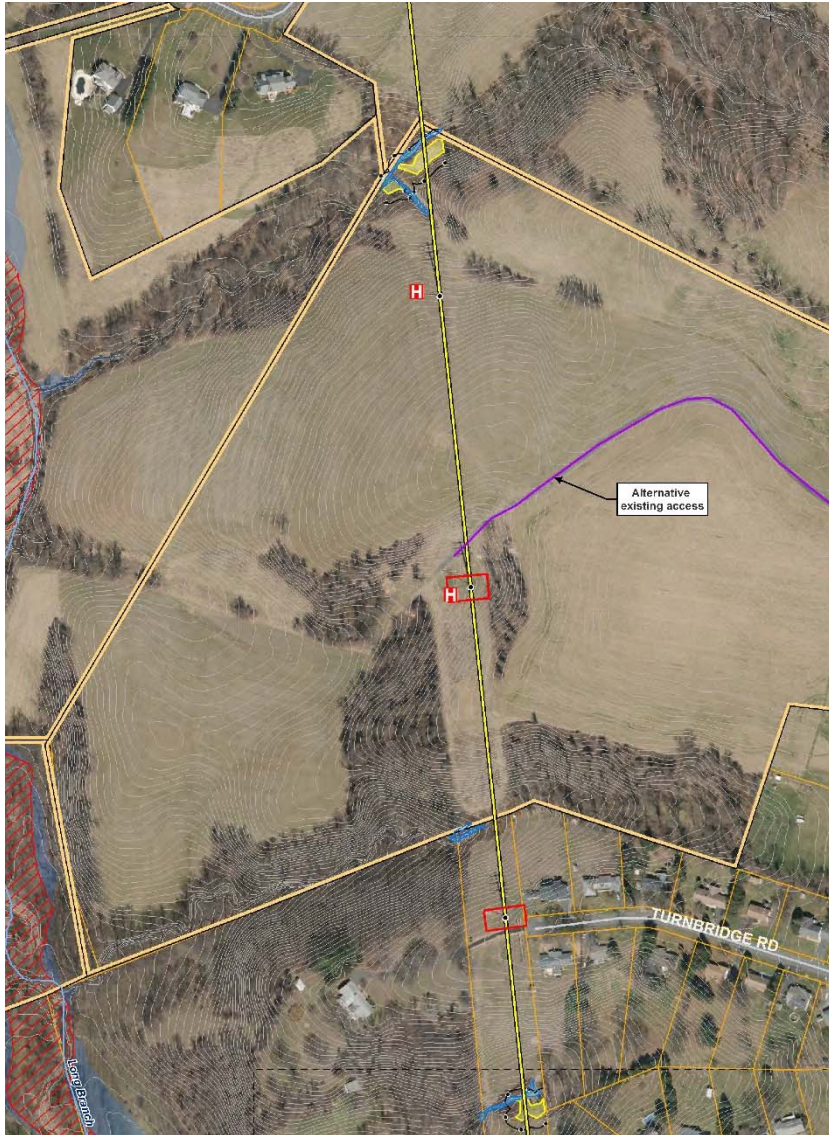
Boundary Features

-  Parcel Boundary
-  Easement or Protected Land



An Exelon Company





Project Features

- Existing Structure
- ▲ Project Substation
- Project Circuit
- Proposed Access
- ▭ Limits of Disturbance (LOD)
- ☁ FEMA 100 Year Flood

Boundary Features

- ▭ Parcel Boundary
- ▭ Easement or Protected Land








An Exelon Company







Project Features

- Existing Structure
-  Project Substation
-  Project Circuit
-  Proposed Access
-  Limits of Disturbance (LOD)
-  FEMA 100 Year Flood

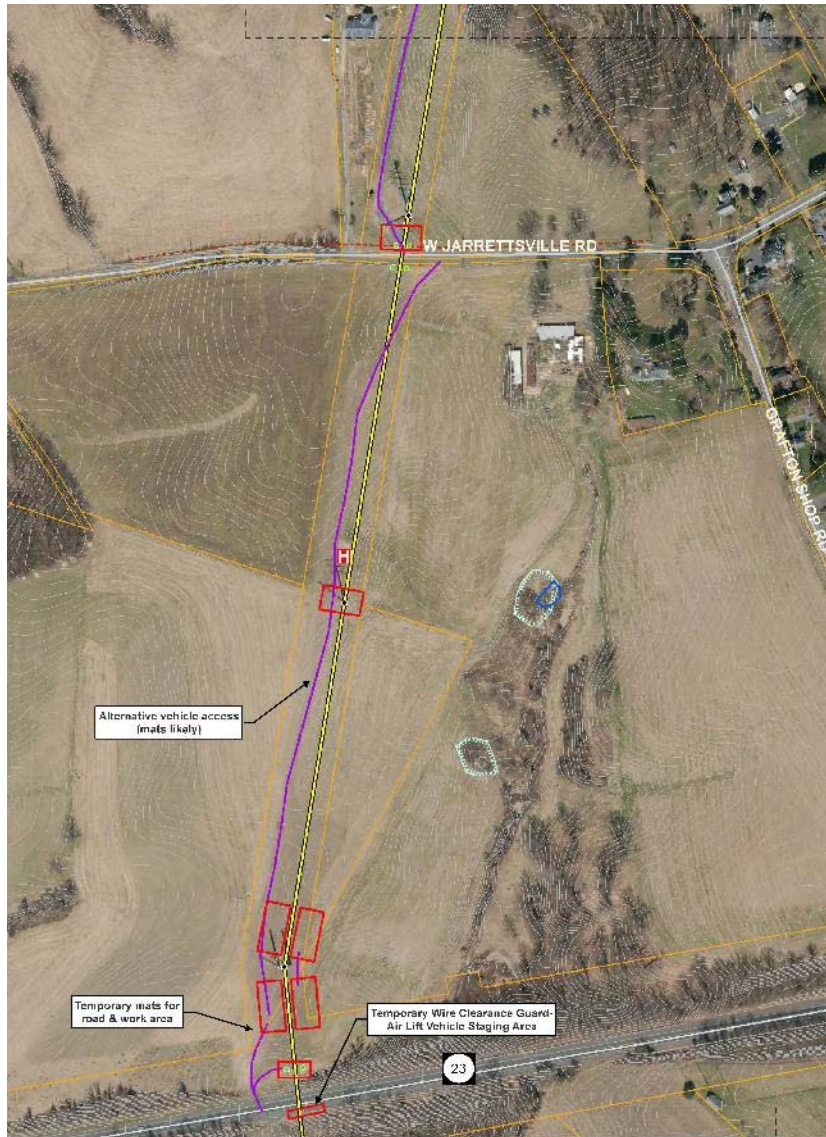
Boundary Features

-  Parcel Boundary
-  Easement or Protected Land



An Exelon Company





Project Features

- Existing Structure
- ▲ Project Substation
- Project Circuit
- Proposed Access
- ▭ Limits of Disturbance (LOD)
- ▨ FEMA 100 Year Flood

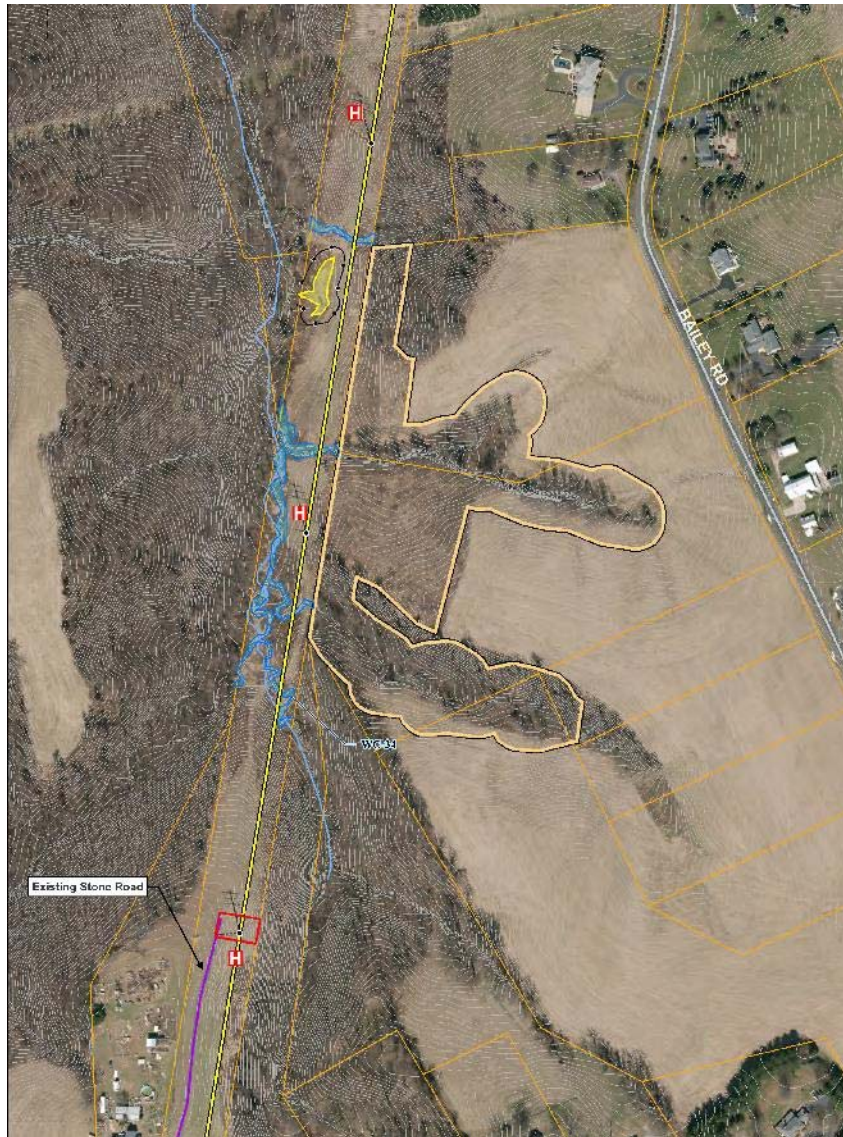
Boundary Features

- ▭ Parcel Boundary
- ▭ Easement or Protected Land








An Exelon Company







Project Features

- Existing Structure
-  Project Substation
-  Project Circuit
-  Proposed Access
-  Limits of Disturbance (LOD)
-  FEMA 100 Year Flood

Boundary Features

-  Parcel Boundary
-  Easement or Protected Land



An Exelon Company





Project Features

- Existing Structure
- ▲ Project Substation
- Project Circuit
- Proposed Access
- ▭ Limits of Disturbance (LOD)
- ☁ FEMA 100 Year Flood

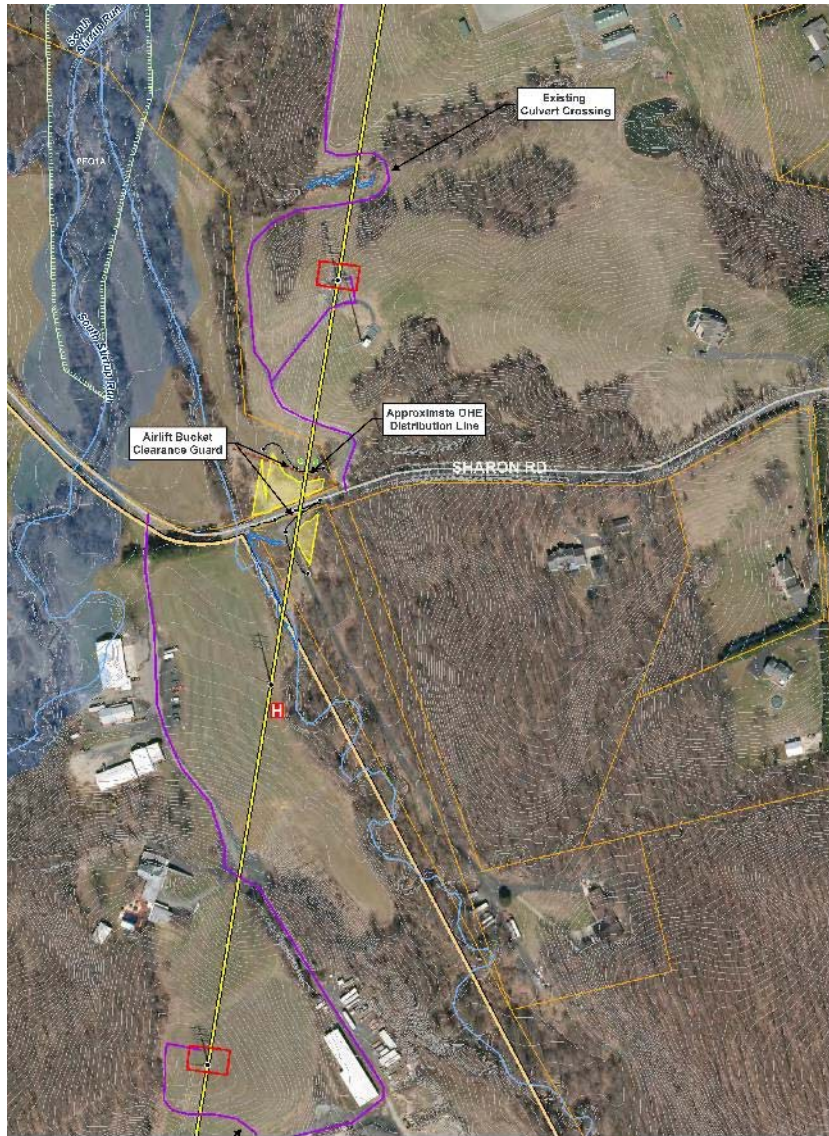
Boundary Features

- ▭ Parcel Boundary
- ▭ Easement or Protected Land








An Exelon Company







Project Features

- Existing Structure
-  Project Substation
-  Project Circuit
-  Proposed Access
-  Limits of Disturbance (LOD)
-  FEMA 100 Year Flood

Boundary Features

-  Parcel Boundary
-  Easement or Protected Land



An Exelon Company





Project Features

- Existing Structure
- ▲ Project Substation
- Project Circuit
- Proposed Access
- ▭ Limits of Disturbance (LOD)
- ☁ FEMA 100 Year Flood

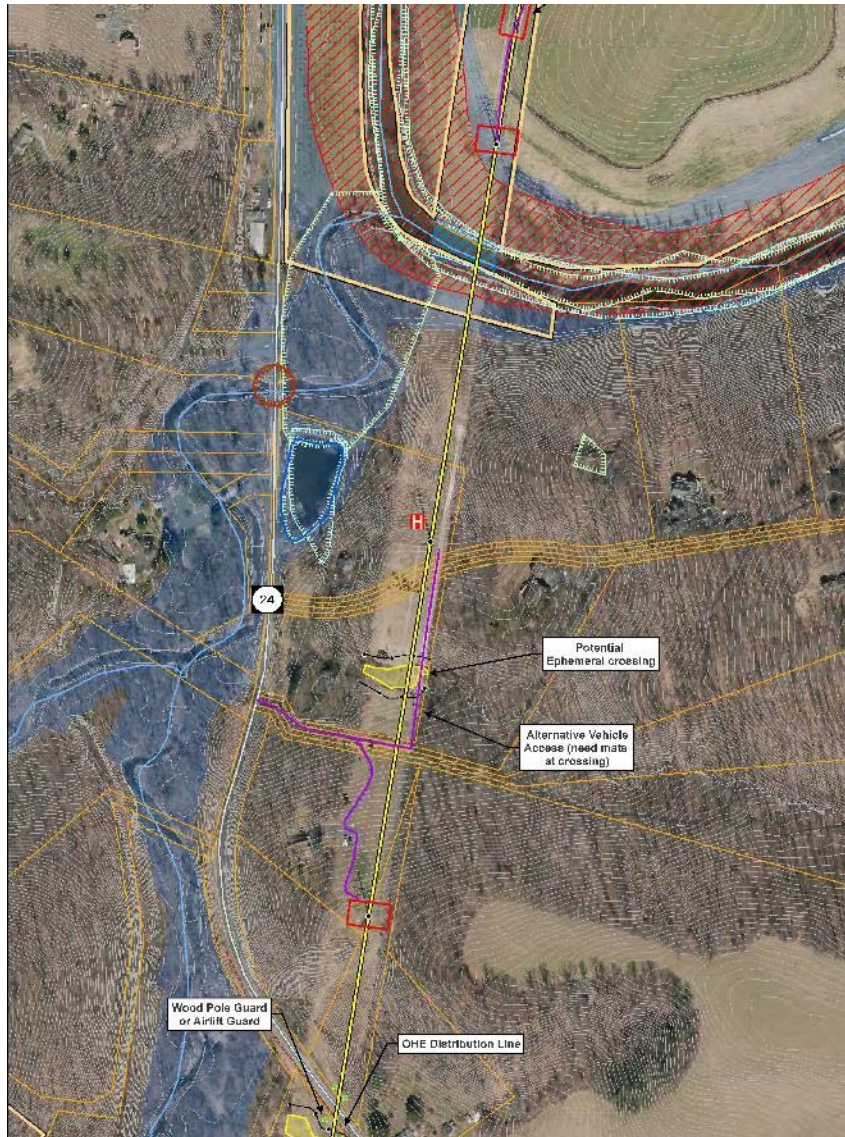
Boundary Features

- ▭ Parcel Boundary
- ▭ Easement or Protected Land








An Exelon Company







Project Features

- Existing Structure
-  Project Substation
-  Project Circuit
-  Proposed Access
-  Limits of Disturbance (LOD)
-  FEMA 100 Year Flood

Boundary Features

-  Parcel Boundary
-  Easement or Protected Land



An Exelon Company





Project Features

- Existing Structure
- ▲ Project Substation
- Project Circuit
- Proposed Access
- Limits of Disturbance (LOD)
- ☁ FEMA 100 Year Flood

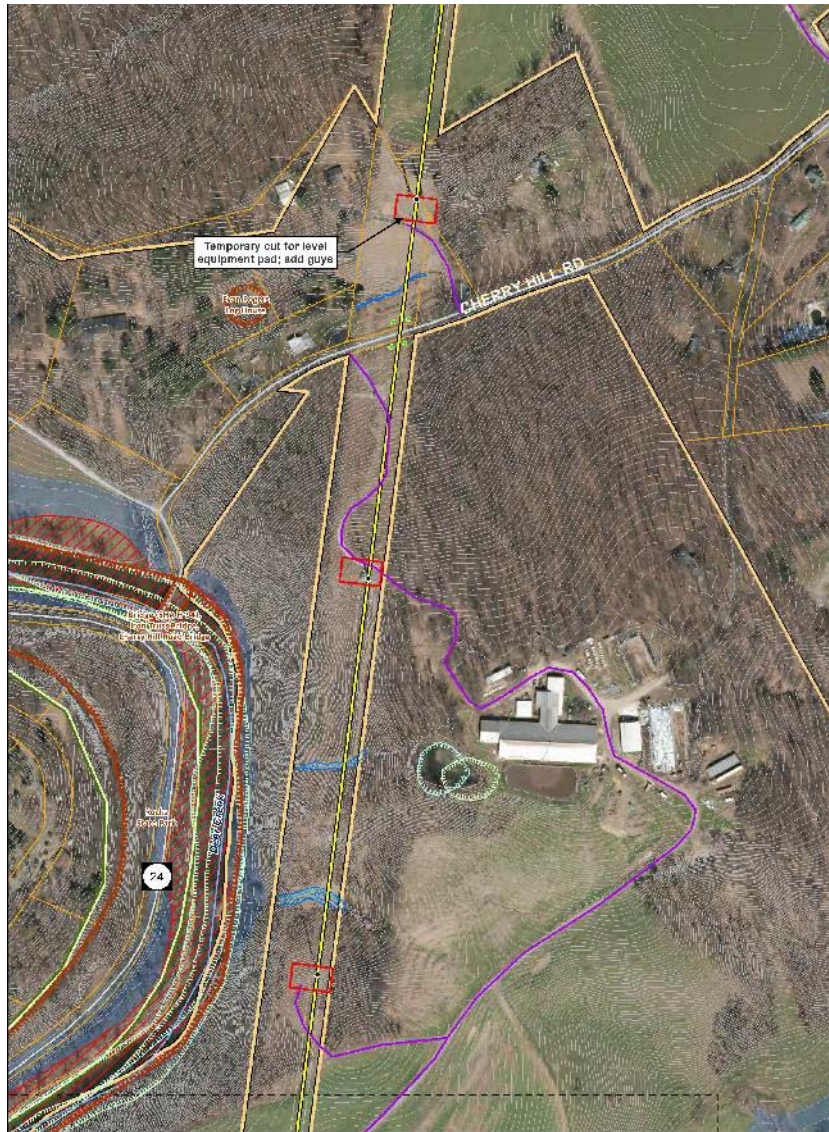
Boundary Features

- Parcel Boundary
- Easement or Protected Land








An Exelon Company







Project Features

- Existing Structure
-  Project Substation
-  Project Circuit
-  Proposed Access
-  Limits of Disturbance (LOD)
-  FEMA 100 Year Flood

Boundary Features

-  Parcel Boundary
-  Easement or Protected Land








An Exelon Company







Project Features

- Existing Structure
-  Project Substation
-  Project Circuit
-  Proposed Access
-  Limits of Disturbance (LOD)
-  FEMA 100 Year Flood

Boundary Features

-  Parcel Boundary
-  Easement or Protected Land



An Exelon Company





Project Features

- Existing Structure
- ▲ Project Substation
- Project Circuit
- Proposed Access
- ▭ Limits of Disturbance (LOD)
- ☁ FEMA 100 Year Flood

Boundary Features

- ▭ Parcel Boundary
- ▭ Easement or Protected Land



An Exelon Company





Project Features

- Existing Structure
- ▲ Project Substation
- Project Circuit
- Proposed Access
- ▭ Limits of Disturbance (LOD)
- ☁ FEMA 100 Year Flood

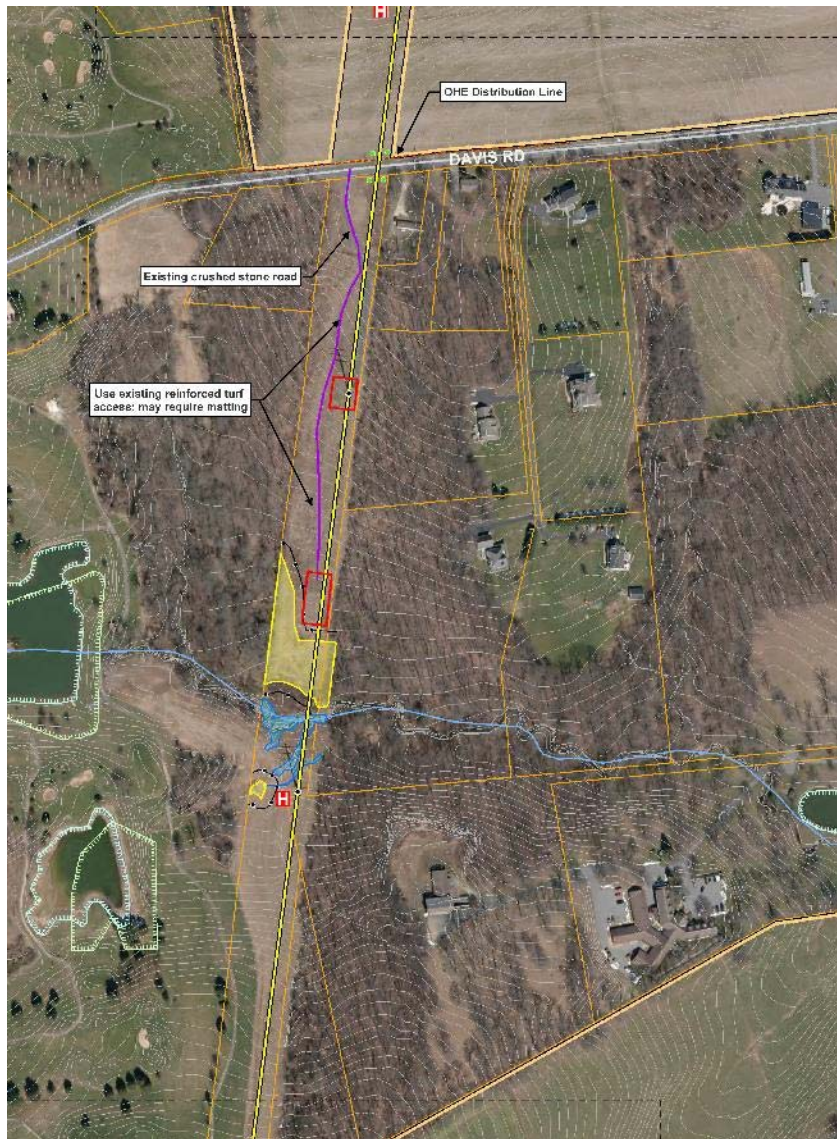
Boundary Features

- ▭ Parcel Boundary
- ▭ Easement or Protected Land








An Exelon Company







Project Features

- Existing Structure
-  Project Substation
-  Project Circuit
-  Proposed Access
-  Limits of Disturbance (LOD)
-  FEMA 100 Year Flood

Boundary Features

-  Parcel Boundary
-  Easement or Protected Land








An Exelon Company







Project Features

- Existing Structure
-  Project Substation
-  Project Circuit
-  Proposed Access
-  Limits of Disturbance (LOD)
-  FEMA 100 Year Flood

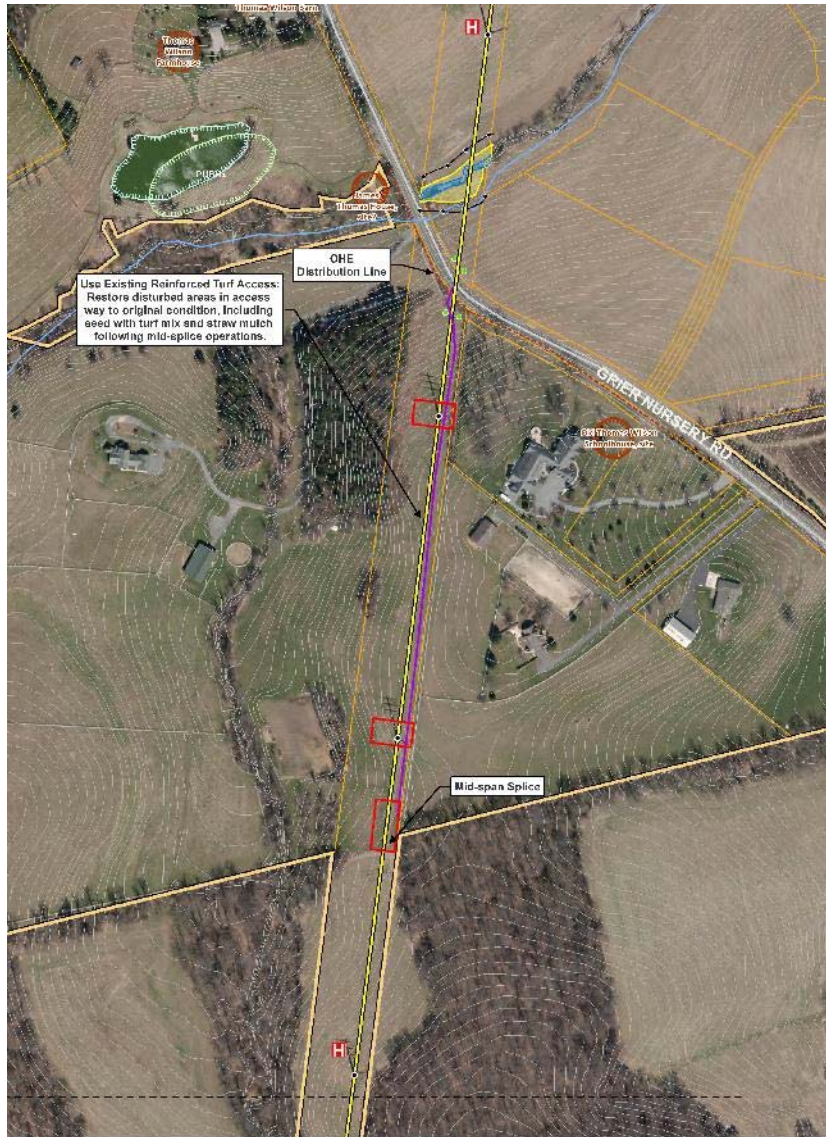
Boundary Features

-  Parcel Boundary
-  Easement or Protected Land



An Exelon Company





Project Features

- Existing Structure
- ▲ Project Substation
- ▬ Project Circuit
- ▬ Proposed Access
- ▭ Limits of Disturbance (LOD)
- ☁ FEMA 100 Year Flood

Boundary Features

- ▭ Parcel Boundary
- ▭ Easement or Protected Land



An Exelon Company





Project Features

- Existing Structure
- ▲ Project Substation
- Project Circuit
- Proposed Access
- ▭ Limits of Disturbance (LOD)
- ☁ FEMA 100 Year Flood

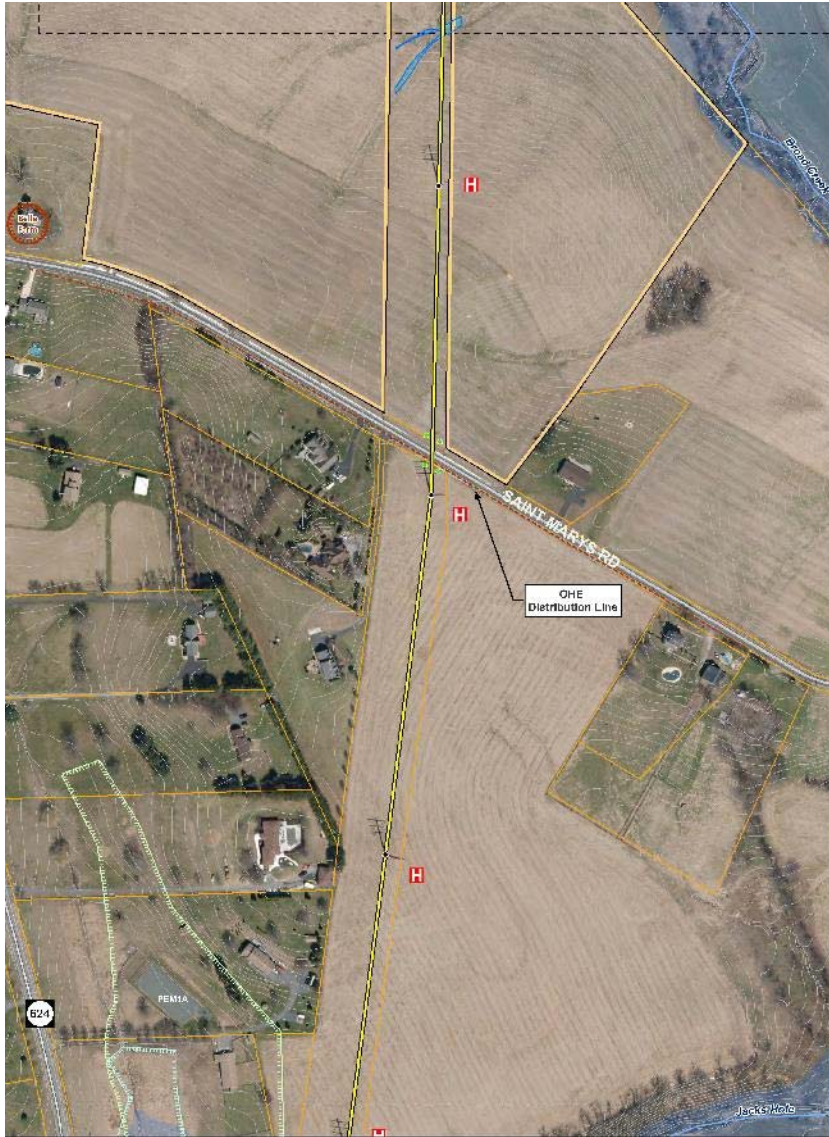
Boundary Features

- ▭ Parcel Boundary
- ▭ Easement or Protected Land



An Exelon Company





Project Features

- Existing Structure
- ▲ Project Substation
- Project Circuit
- Proposed Access
- Limits of Disturbance (LOD)
- ☁ FEMA 100 Year Flood

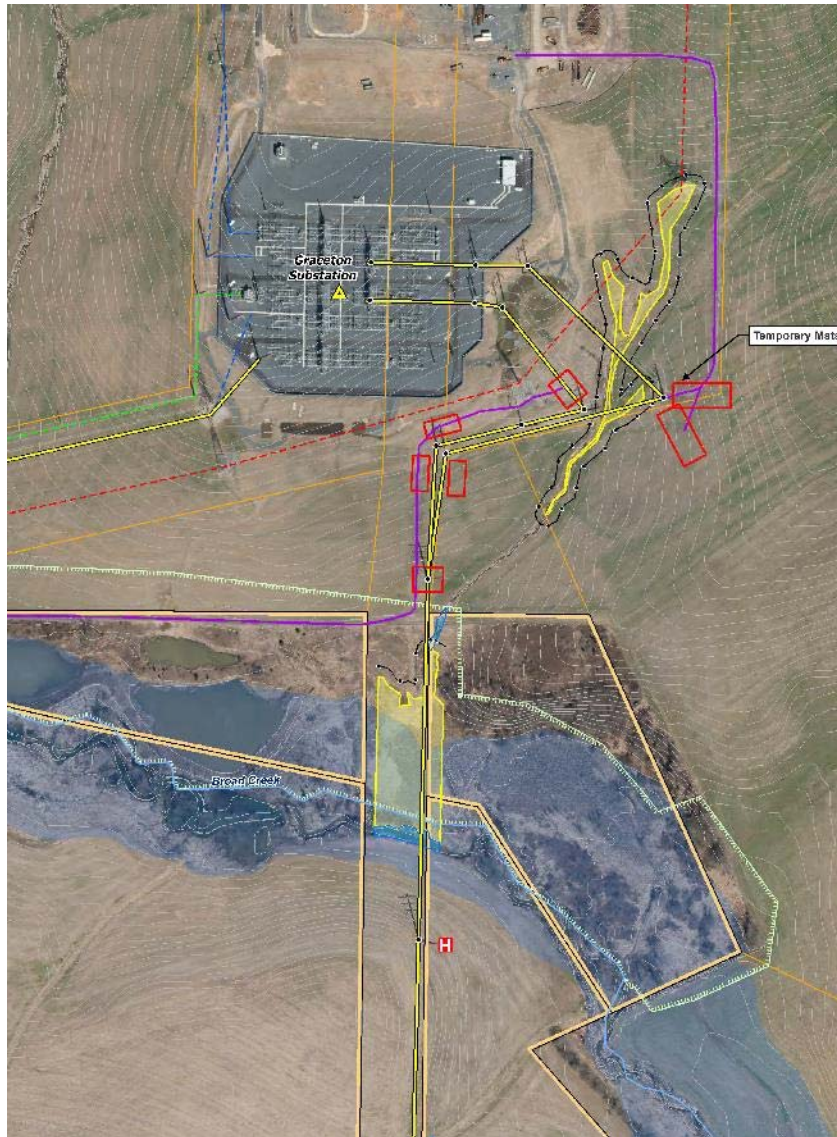
Boundary Features

- Parcel Boundary
- Easement or Protected Land



An Exelon Company





Project Features

- Existing Structure
- ▲ Project Substation
- Project Circuit
- Proposed Access
- Limits of Disturbance (LOD)
- ☁ FEMA 100 Year Flood

Boundary Features

- Parcel Boundary
- ▬ Easement or Protected Land



An Exelon Company



Project Schedule

- Hold public information meetings
- Receive environmental permits
- Install construction entrances
- Construction Schedule
 - » Construction Season 1
 - » Construction Season 2
 - » Construction Season 3
- All equipment in-service

February 2020

Spring 2020

March/April 2020

March 2020 – June 2020

Sept 2020 – Dec 2020

Feb 2021 – June 2021

~ June 2021



An Exelon Company



Project Contacts

- Lauren McKee
BGE Senior Project Manager
- Tim Cooke (443) 603-3730
Community Coordination
- Email: BGEProject@bge.com



An Exelon Company

