

# Raphael Road to Northeast Substation Reconductoring Project

## Public Information Meeting

Wednesday, February 12, 2020

Lauren McKee, Sr. Project Manager

February 2020



An Exelon Company



# Welcome

- Introductions
- BGE Reliability Upgrades
- Project Background
- Scope of Work
- Project Schedule
- Questions & Answers



An Exelon Company



# What does **RELIABILITY** mean?



RELIABLE ENERGY.  
SMART ENERGY.



An Exelon Company

[ THAT'S  
SMART  
ENERGY ]<sup>SM</sup>

# Investing in Our Infrastructure

- Investments in infrastructure upgrades and maintenance contributed to a ~20% improvement in system-wide reliability since 2010
- BGE has invested more than \$9 billion in system upgrades and expansions since 2002, including ongoing investments in natural gas pipes, utility poles, overhead power lines, underground cable and other equipment
- To maintain the responsibility as steward of ratepayer's money, an additional \$4.5 billion will be invested in infrastructure over the next five years
- System upgrades and expansions are expected to lead to fewer outages and faster restoration when outages occur



An Exelon Company

[ THAT'S  
SMART  
ENERGY ]<sup>SM</sup>

# Reliability

- BGE is committed to safely and reliably maintaining specific levels of service to the consumer
- BGE routinely monitors the system's infrastructure (including poles, meters, transformers, trees, gas mains & transmission lines)



An Exelon Company

[ THAT'S  
SMART  
ENERGY ]<sup>SM</sup>

# Project Purpose

- To provide safe and reliable delivery of energy to our customers
- To improve market efficiency, transmission reliability and reduce congestion on the system within the Pennsylvania, Jersey, Maryland (PJM) Power Pool
- To reduce the potential for market congestion and decrease impacts to the BGE transmission zone identified in the Market Efficiency Analysis Long Term Proposal
- To meet the requirements of the PJM Regional Transmission Expansion Plan (RTEP)



An Exelon Company



# Project Background

- BGE is upgrading the transmission infrastructure between the Raphael Road Substation in Kingsville and Northeast Substation in White Hall, MD
- This project will help BGE improve the capacity and reliability of the existing service in this corridor



An Exelon Company

[THAT'S  
SMART  
ENERGY]<sup>SM</sup>



# Project Scope

- Install or maintain stone construction entrances where needed along BGE right-of-way
- Reinforce two existing tower structure foundations near the Northeast Substation
- Replace (Reconductor) 3.9 miles of transmission wire



An Exelon Company







### Project Features

- Existing Structure
- ▲ Project Substation
- Project Circuit
- Proposed Access
- ▭ Limits of Disturbance (LOD)
- ☁ FEMA 100 Year Flood

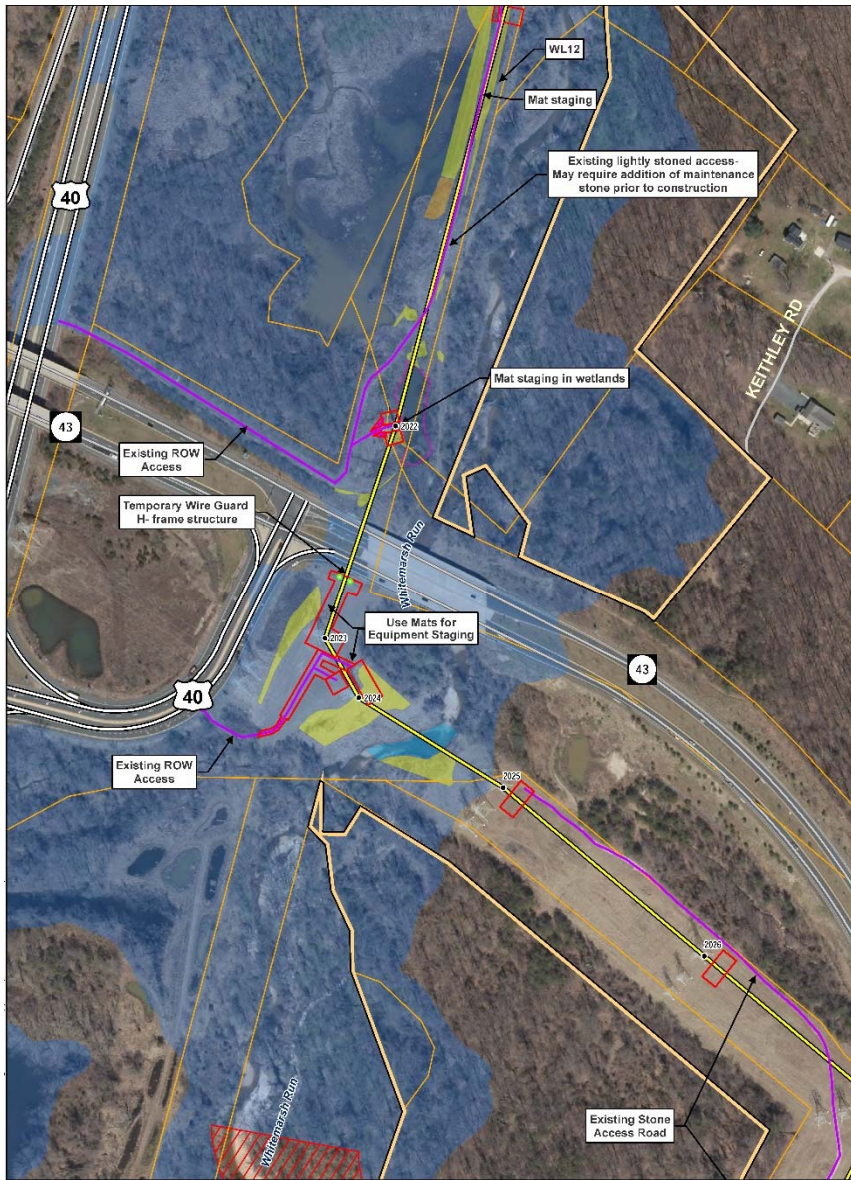
### Boundary Features

- ▭ Parcel Boundary
- ▭ Easement or Protected Land



An Exelon Company





### Project Features

- Existing Structure
- ▲ Project Substation
- Project Circuit
- Proposed Access
- Limits of Disturbance (LOD)
- ☁ FEMA 100 Year Flood

### Boundary Features

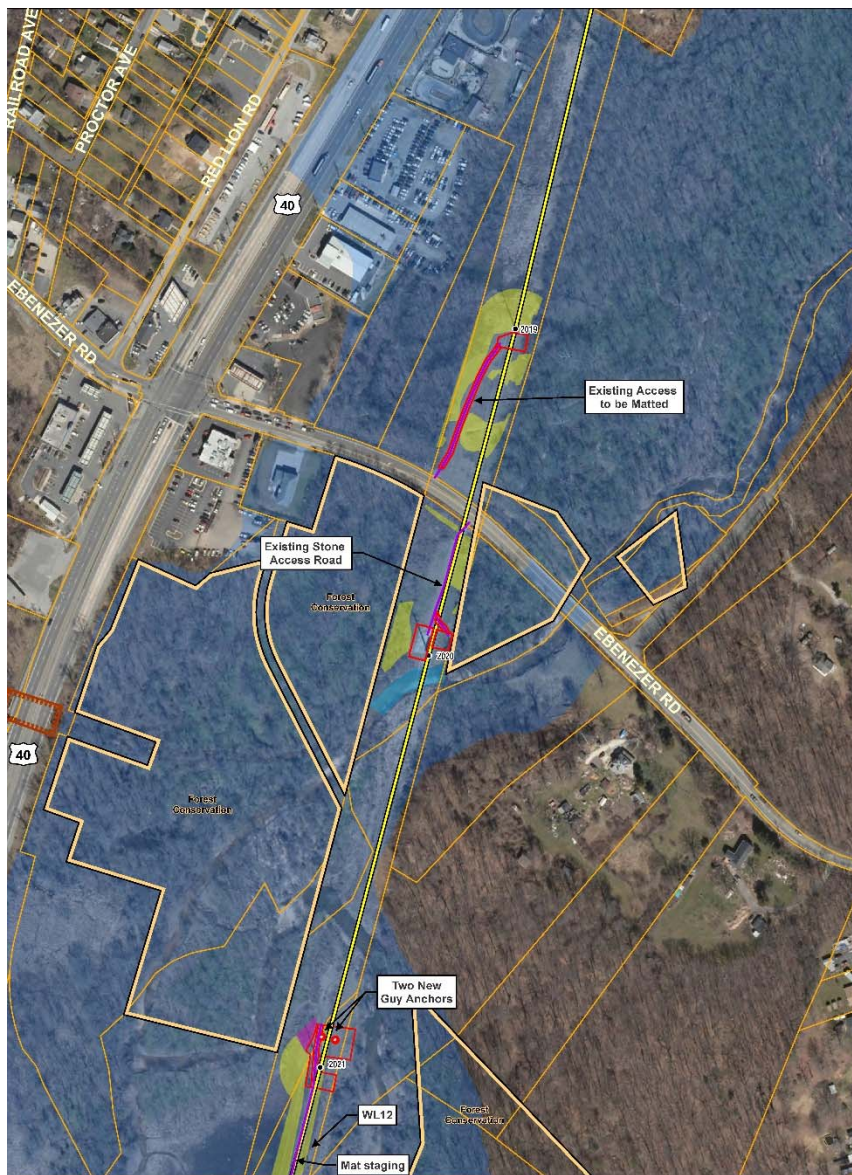
- Parcel Boundary
- Easement or Protected Land



An Exelon Company







### Project Features

- Existing Structure
- ▲ Project Substation
- Project Circuit
- Proposed Access
- Limits of Disturbance (LOD)
- ☁ FEMA 100 Year Flood

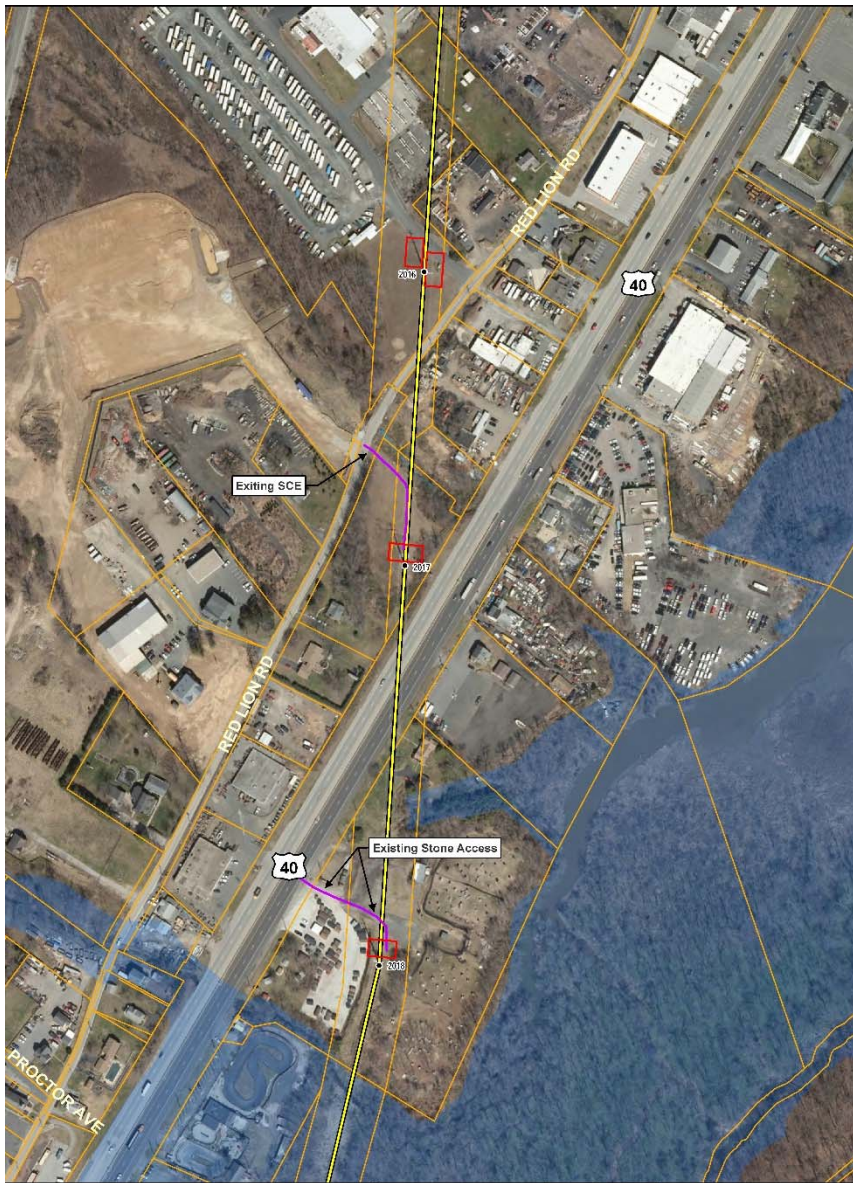
### Boundary Features

- Parcel Boundary
- Easement or Protected Land



An Exelon Company





### Project Features

- Existing Structure
- ▲ Project Substation
- Project Circuit
- Proposed Access
- Limits of Disturbance (LOD)
- ☁ FEMA 100 Year Flood

### Boundary Features

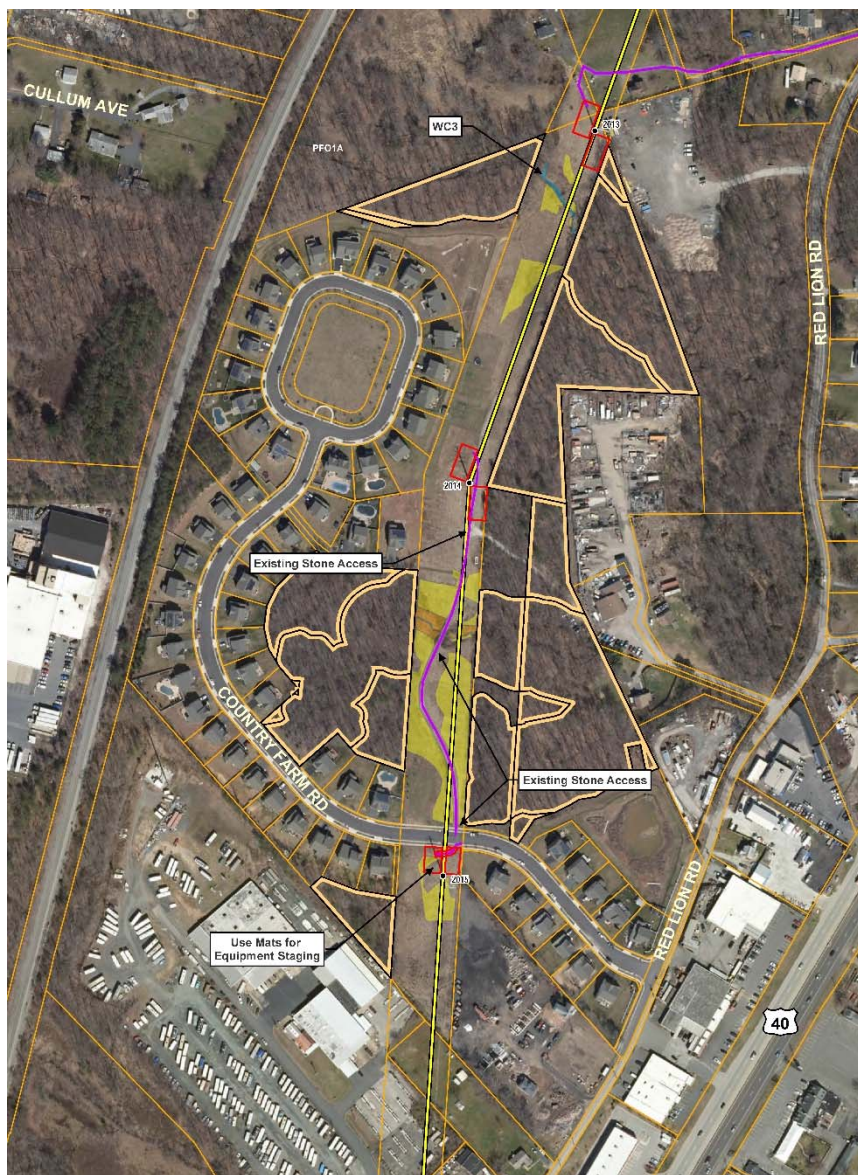
- Parcel Boundary
- ▬ Easement or Protected Land



An Exelon Company







### Project Features

- Existing Structure
- ▲ Project Substation
- Project Circuit
- Proposed Access
- Limits of Disturbance (LOD)
- ☁ FEMA 100 Year Flood

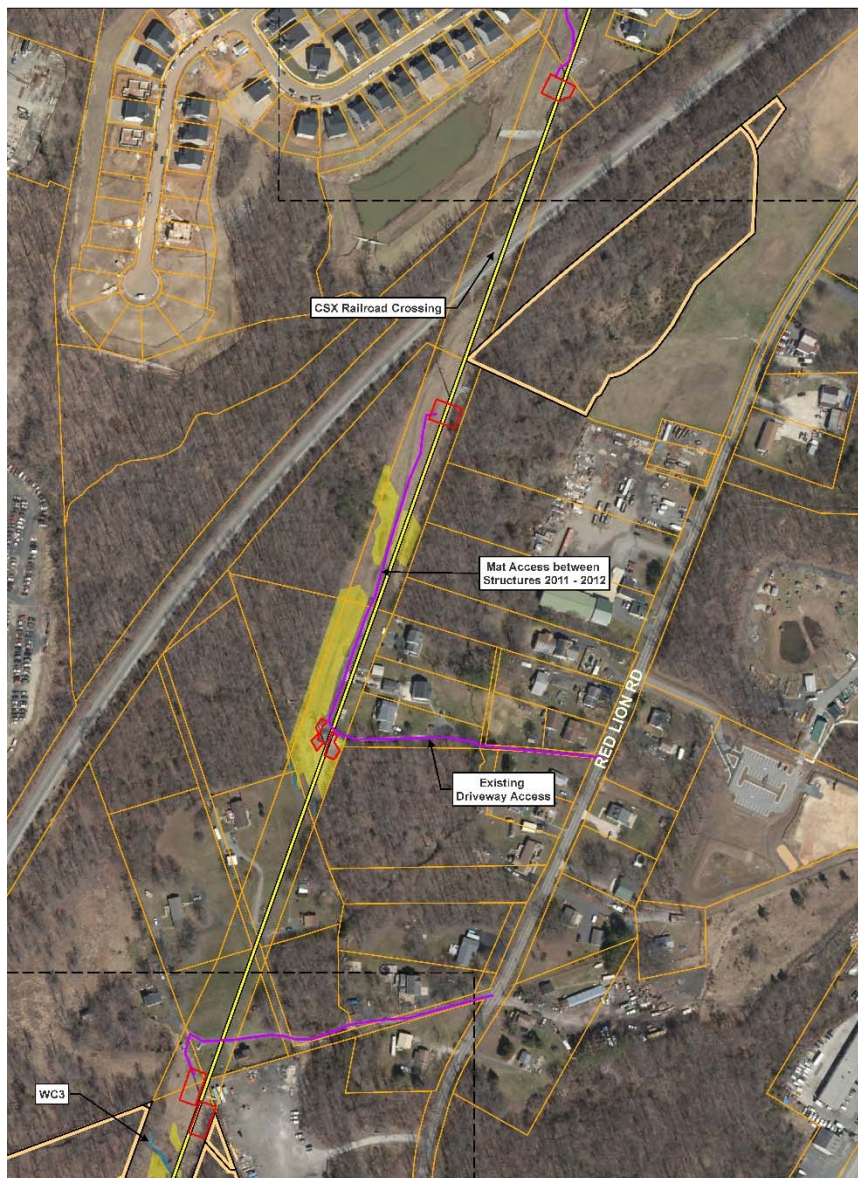
### Boundary Features

- Parcel Boundary
- Easement or Protected Land



An Exelon Company





### Project Features

- Existing Structure
- ▲ Project Substation
- ▬ Project Circuit
- ▬ Proposed Access
- ▭ Limits of Disturbance (LOD)
- ☁ FEMA 100 Year Flood

### Boundary Features

- ▭ Parcel Boundary
- ▭ Easement or Protected Land



An Exelon Company







### Project Features

- Existing Structure
- ▲ Project Substation
- Project Circuit
- Proposed Access
- Limits of Disturbance (LOD)
- ☁ FEMA 100 Year Flood

### Boundary Features

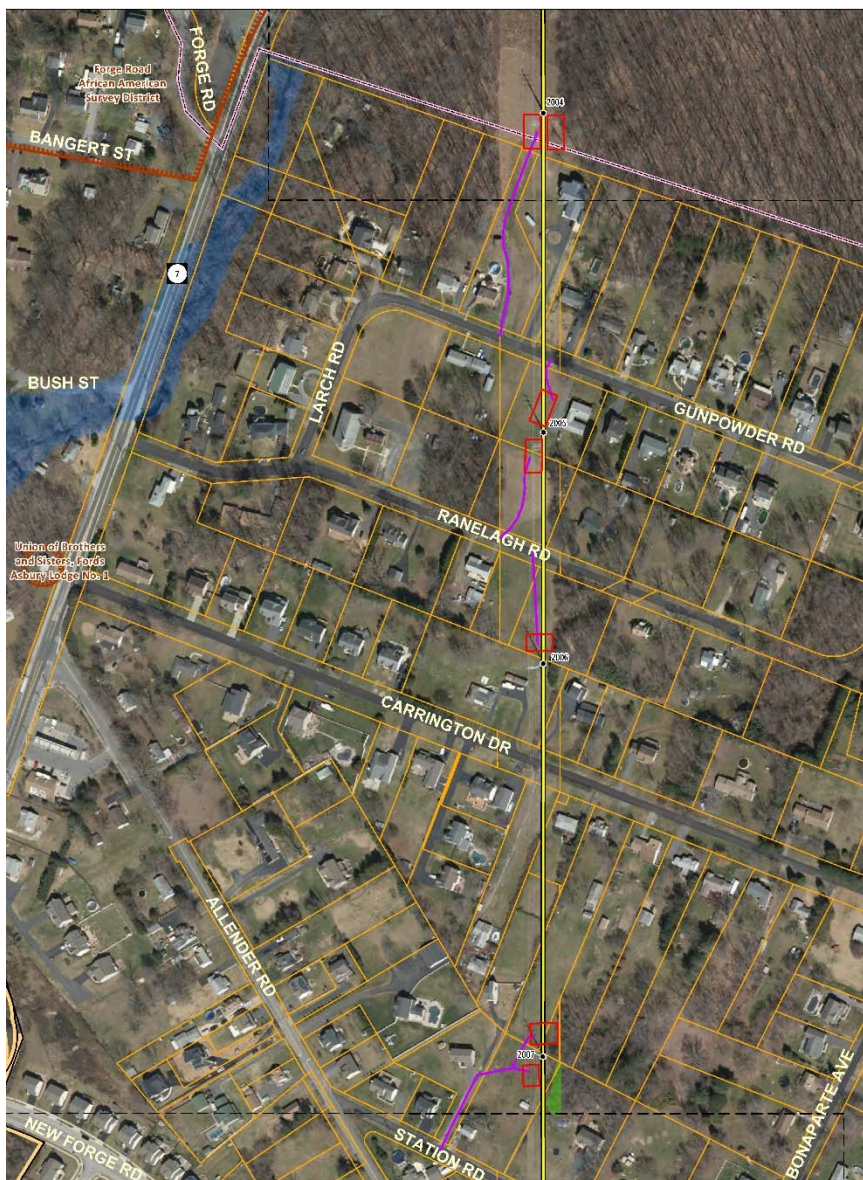
- Parcel Boundary
- ▬ Easement or Protected Land



An Exelon Company







### Project Features

- Existing Structure
- ▲ Project Substation
- Project Circuit
- Proposed Access
- Limits of Disturbance (LOD)
- ☁ FEMA 100 Year Flood

### Boundary Features

- Parcel Boundary
- ▬ Easement or Protected Land



An Exelon Company





### Project Features

- Existing Structure
- ▲ Project Substation
- Project Circuit
- Proposed Access
- Limits of Disturbance (LOD)
- ☁ FEMA 100 Year Flood

### Boundary Features

- Parcel Boundary
- ▬ Easement or Protected Land



An Exelon Company





# Project Schedule

- Hold public information meetings February 2020
- Receive environmental permits Spring 2020
- Install construction entrances & mats Spring 2020
- Construction Schedule
  - » Construction Season March 2020 – June 2020  
Sept 2020 – Dec 2020
- All equipment in-service ~ December 2020



An Exelon Company



# Project Contacts

- Lauren McKee  
BGE Senior Project Manager
- Tim Cooke (443) 603-3730  
Community Coordination
- Email: [BGEProject@bge.com](mailto:BGEProject@bge.com)



An Exelon Company

